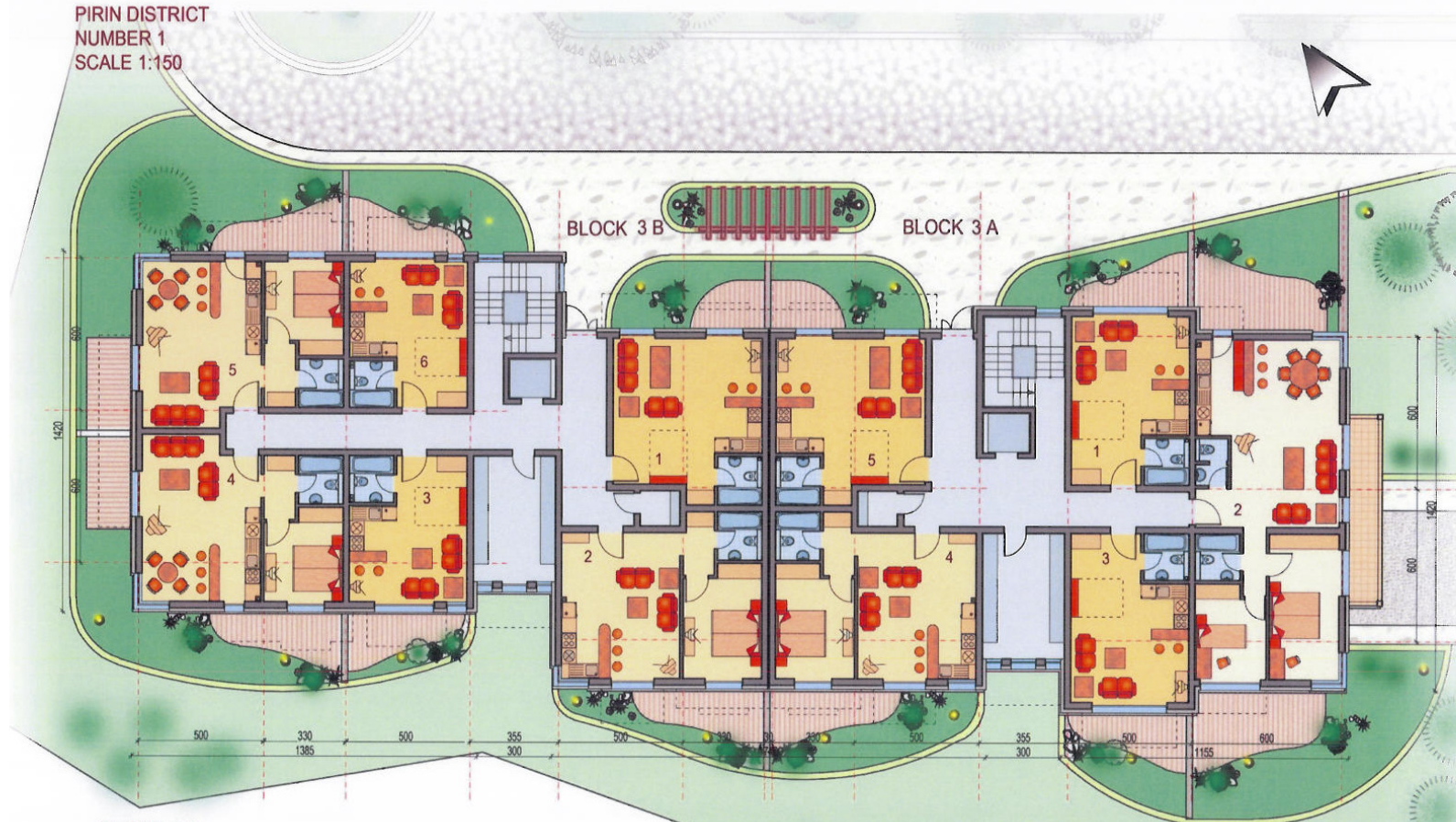


Plan of Buildings in Pirin 1 District

PIRIN DISTRICT
NUMBER 1
SCALE 1:150



BLOCK 3 B FIRST FLOOR

APARTMENT 1 - 47.5 m², INCL. TERRACE - 5.6 m²; GARDEN - 9.6 m²
 APARTMENT 2 - 63.8 m², INCL. TERRACE - 8.9 m²; GARDEN - 8.1 m²
 APARTMENT 3 - 38.4 m², INCL. TERRACE - 7.7 m²; GARDEN - 3.1 m²
 APARTMENT 4 - 70.5 m², INCL. TERRACE - 16.0 m²; GARDEN - 26.2 m²
 APARTMENT 5 - 70.5 m², INCL. TERRACE - 16.0 m²; GARDEN - 46 m²
 APARTMENT 6 - 38.3 m², INCL. TERRACE - 7.7 m²; GARDEN - 14.8 m²

STUDIO
 ONE BEDROOM
 TWO BEDROOMS
 TERRACE
 GARDEN

BLOCK 3 A FIRST FLOOR

APARTMENT 1 - 42.9 m², INCL. TERRACE - 7.7 m²; GARDEN - 9.8 m²
 APARTMENT 2 - 123.9 m², INCL. TERRACE - 27.4 m²; GARDEN - 45.7 m²
 APARTMENT 3 - 43.1 m², INCL. TERRACE - 7.7 m²; GARDEN - 8.8 m²
 APARTMENT 4 - 63.4 m², INCL. TERRACE - 8.9 m²; GARDEN - 14.3 m²
 APARTMENT 5 - 47.5 m², INCL. TERRACE - 5.6 m²; GARDEN - 9.6 m²